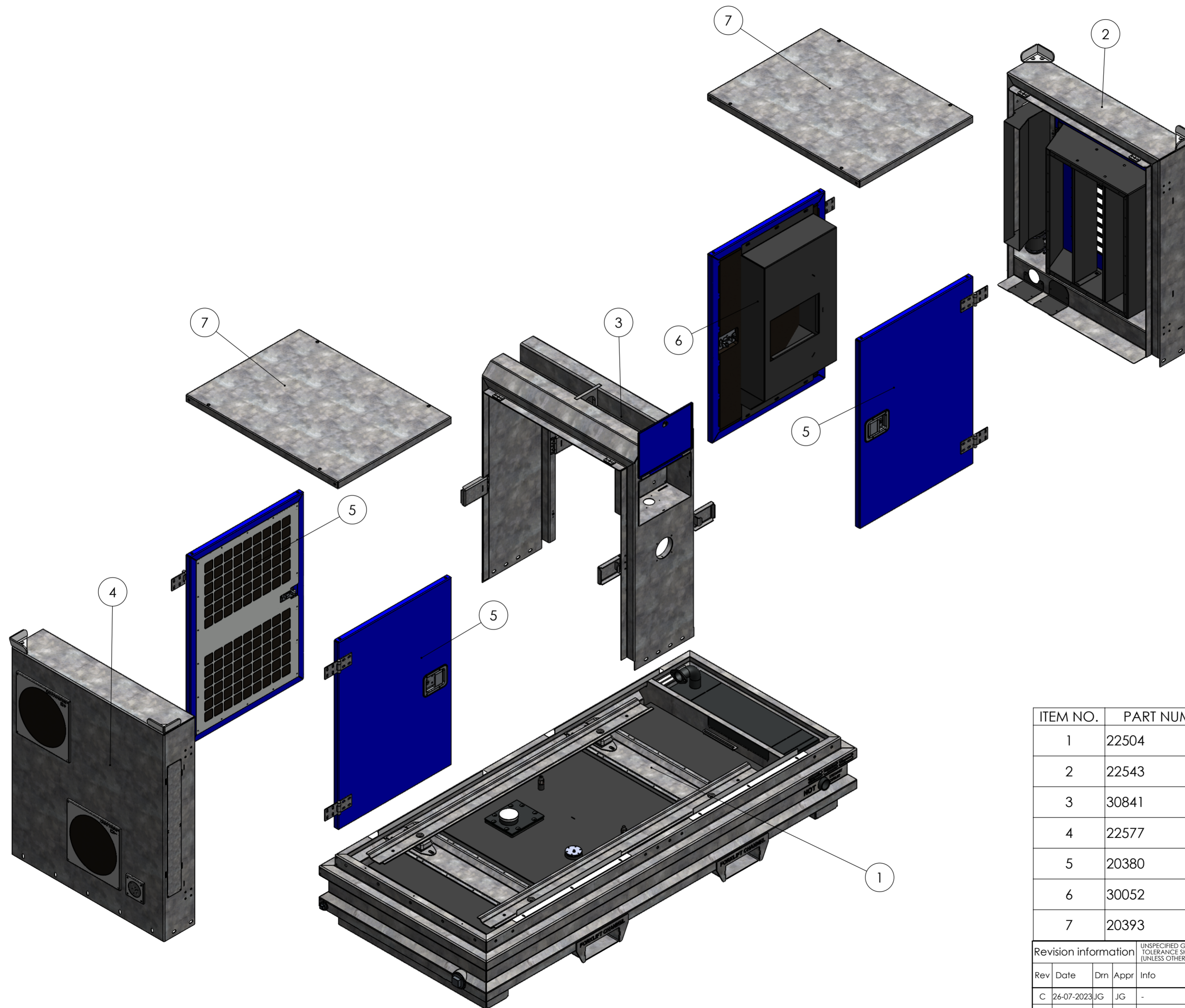


STANDARD CANOPY SIP100-150 TOUCHSCREEN



ITEM NO.	PART NUMBER	DESCRIPTION	QTY.
1	22504	UNDER BASE SIP100-150 COMPLETE	1
2	22543	PANEL C STANDARD SIP100-150	1
3	30841	MIDDLE PANEL STANDARD CANOPY VERSION II	1
4	22577	PANEL D STANDARD SIP100-150	1
5	20380	DOOR WITH LOCKER 1010 mm x 705 mm COMPLETE	3
6	30052	DOOR AIR BOX STANDARD SIP100-150 COMPLETE	1
7	20393	TOP PANEL CANOPY 945 mm x 705 mm	2

Revision information					UNSPECIFIED GEOMETRICAL, LINEAR AND ANGULAR TOLERANCE SHALL CONFORM TO ISO 2768-MK (UNLESS OTHERWISE STATED)			format	scale	projection	
Rev	Date	Drn	Appr	Info	A2	1:13	⊕	⊖			
C	26-07-2023	JG	JG	-	Drawn:	AK	web: www.impulsebv.com				
B	19-07-2023	JG	JG	-	Date:	13-02-2023	Material:				
A	12-05-2023	JG	JG	-	Rev.:	C	Weight: 592.22 Kg				
-	23-03-2023	JG	-	-	State:	Approved	Treatm.: Assemble				

PDM No. : 30840 **Title: STANDARD CANOPY SIP100-150 TOUCHSCREEN**