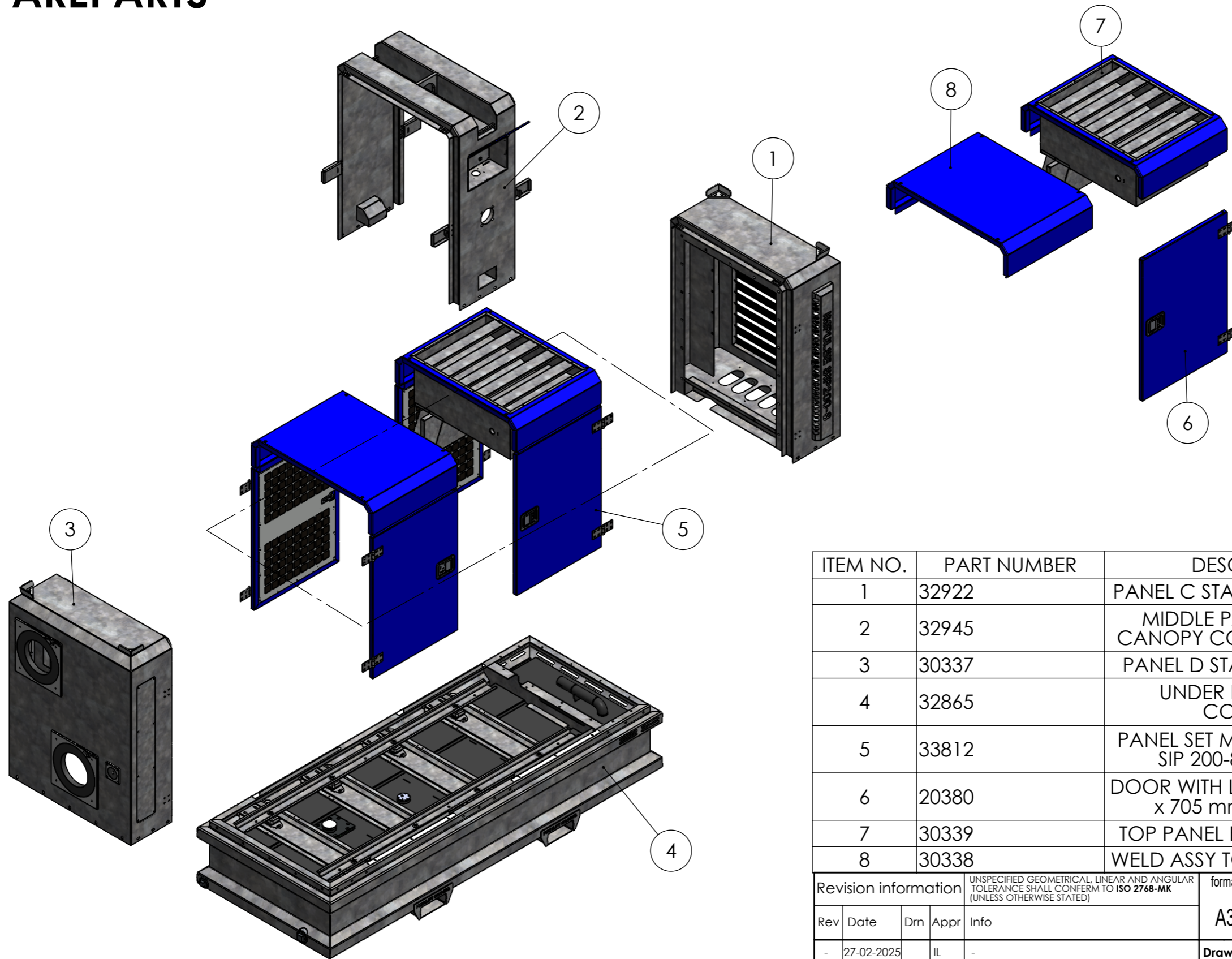


MEDIUM CANOPY SIP 200-8 HATZ 4H50 SPAREPARTS

REQUEST PARTS ONLINE



ITEM NO.	PART NUMBER	DESCRIPTION	QTY.
1	32922	PANEL C STANDARD SIP-200-8	1
2	32945	MIDDLE PANEL MEDIUM CANOPY COMPLETE (PV700)	1
3	30337	PANEL D STANDARD SIP-200	1
4	32865	UNDER BASE SIP-200 COMPLETE	1
5	33812	PANEL SET MEDIUM CANOPY SIP 200-8 HATZ 4M41	1
6	20380	DOOR WITH LOCKER 1010 mm x 705 mm COMPLETE	4
7	30339	TOP PANEL EXHAUST SIP-200	1
8	30338	WELD ASSY TOP PANEL SIP-200	1

Revision information					UNSPECIFIED GEOMETRICAL, LINEAR AND ANGULAR TOLERANCE SHALL CONFORM TO ISO 2768-MK (UNLESS OTHERWISE STATED)			format	scale	projection	
Rev	Date	Drn	Appr	Info	A3	1:100					
-	27-02-2025	IL	-	-	Drawn:	IL	web: www.impulsebv.com				
					Date:	17-02-2025	Material:				
					Rev.:	-	Weight: 1020.62 Kg				
					State:	Approved	Treatment: Assemble				

PDM No. : 35284 Title: MEDIUM CANOPY SIP 200-8 HATZ 4H50 - EXPLODED VIEW