



**ecomizerpro**

# **ECOMIZER-PRO CONNECTION MANUAL**

HIGH-QUALITY MOBILE PUMPS CONTROLLERS





## Introduction

This manual is written to correctly install the required Ecomizer-Pro remote software on your WINDOWS PC or WINDOWS laptop.

The Ecomizer-Pro control developed by Impulse comes standard with a remote solution, allowing you to remotely read, operate, and adjust settings for your pump without the need to access the machine physically. The remote solution involves taking control of the user interface screen via a VPN connection on a Windows computer or laptop. The user interface screen displayed on the pump is mirrored 1:1 on your computer, with remote actions being 100% identical to the actions performed at the machine.

To establish a remote connection, two software downloads are required, which will ensure a secure VPN connection and screen takeover. The Superlink software establishes a VPN connection between your Windows computer and the Impulse Router located in the pump.

The PowerVision Toolkit software facilitates screen takeover. This software allows the HMI touchscreen screen to be displayed on your remotely controlled computer.

On the Impulse cloud server, using the login credentials provided to you, you can view all your pumps uploaded in your group that are online or have been online recently on a geographical map. In this cloud server (<https://remote.ecomizerpro.com/login>), you can access all parameters of the connection of the router installed in the pump, retrieve location data, and more.

Impulse is continuously developing our products for greater user experience. For example, taking over the HMI screen from the cloud in the future, without the need for separate software downloads to your computer. However, this feature is still under development, and the software needs to be loaded separately.

This manual will guide you through the process correctly.



## Connection Manual

This manual explains how to use the "Ecomizer-Pro" functionality that came with your pump. Ecomizer-Pro gives you the opportunity to operate and monitor your pump set from your (Windows) PC, anywhere around the world. To achieve this, a number of steps are required to establish the connection between your PC and pump. We cover these steps in this manual.



### To use the remote functionality you need the following

- Ecomizer-Pro pump set which is active
- Login credentials (request via [parts@impulsebv.com](mailto:parts@impulsebv.com))
- PC with Windows 10 or 11
- Internet access
- Two files; SuperLink & PowerVision (Download on [www.impulsebv.com](http://www.impulsebv.com))




### Install both files on your Windows PC


Download the files at: <https://impulsebv.com/remote-connection-support/>

## Support Remote Control


We're a group of passionate people trying to keep your pumps healthy!



Ecomizer Cloud Login



Instructions



Download Files

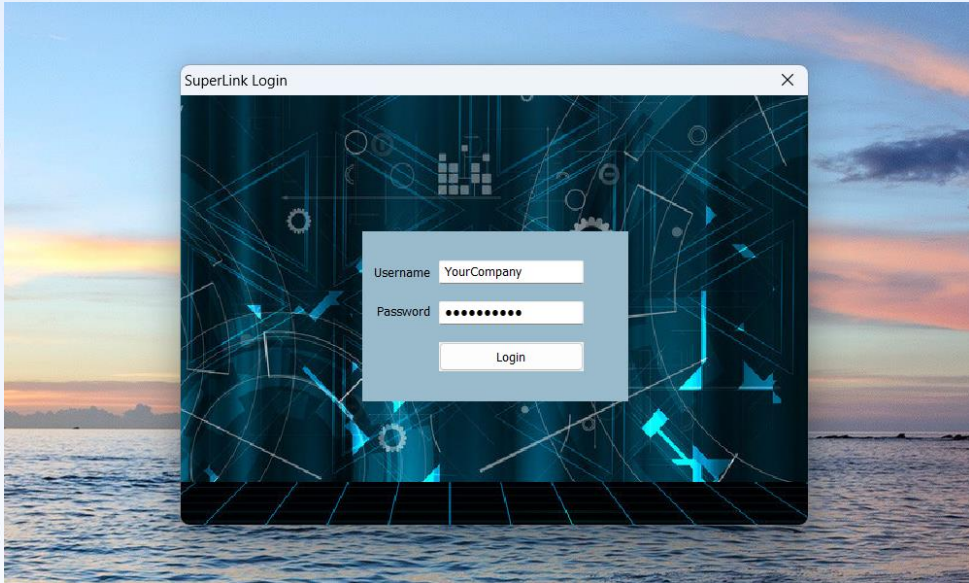
Install both SuperLink and PowerVision on your Windows PC. If you find difficulties during installation please contact your local ICT department.

File	Current Version
SuperLink	V2.2.7 (2022-06-17)
PowerVision toolkit	7.69.0



### Using SuperLink

After the installation, you can open SuperLink via a shortcut on your desktop. The login-screen appears. Here you have to use your personal login credentials as received from your pump supplier.



After logging in, you will enter a new screen where an overview of the pump sets is shown on the left. The connection is shown on the right. When you select a pump on the left, it will be displayed on the right whether a (VPN) connection has been established. The green check marks indicate that the connection was successful.

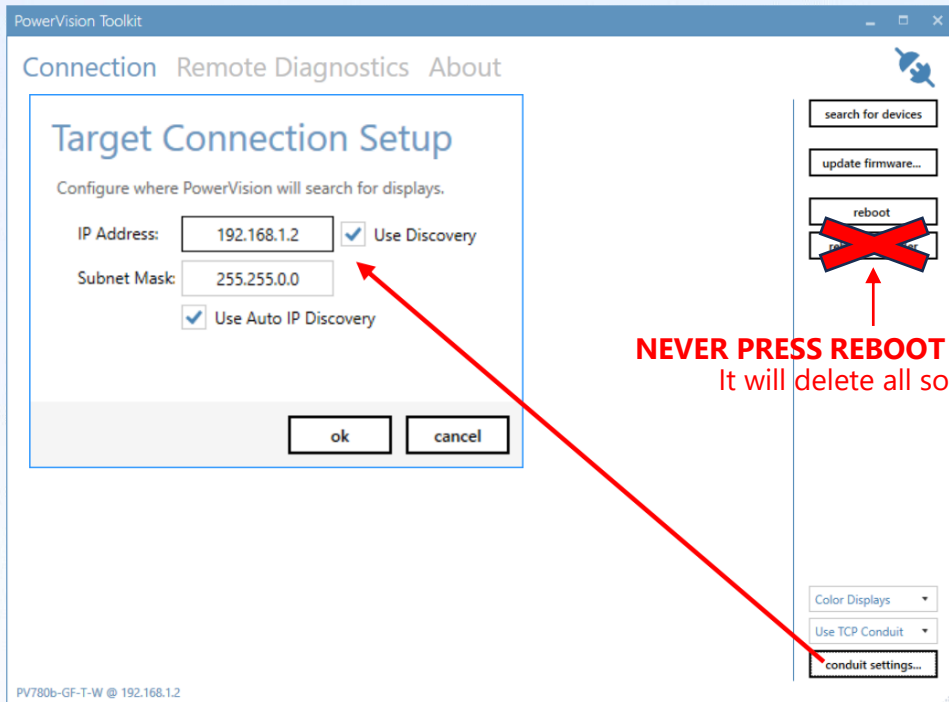
Serial Number	Device Name	IP Address
1120ZP32302100040	SIP 300-12 (3309001)	172.16
1120ZP32302100036	E-SIP 100-4 (3070001)	172.16
1120ZP32302100002	E-SIP 100-4 (2963001)	172.16
1120ZP32302100003	E-SIP 150-6 (3062001)	172.16
1120ZP32302100001	E-SIP 100-4 (3044001)	172.16
1120ZP32302100011	E-SIP 100-4 (3059001)	172.16
1120ZP32302100025	SIP 150-6 (3310001)	172.16
1120ZP32302100058	M2M	172.16
1120ZP32302100027	SIP100-4 DEMO (3262...	172.16
1120ZP32302100021	E-SIP 100-4 (3060001)	172.16
1120ZP32302100024	E-SIP 100-4 (3042001)	172.16
1120ZP32302100039	E-SIP 100-4 (3069001)	172.16
1120ZP32302100023	E-SIP 100-4 (3135001)	172.16
1120ZR32204070010	E-SIP 100-4 (2962001)	172.16
1120ZR32204070012	E-SIP 100-4 (2960001)	172.16
1120ZP32302100012	E-SIP 100-4 (3043001)	172.16
1120ZP32302100019	E-SIP 100-4 (3042001)	172.16
1120ZP32302100026	SIP 150-6 (3311001)	172.16
1120ZP32302100005	E-SIP 150-6 (3072001)	172.16
1120ZP32302100028	SIP 200-8 (3334001)	172.16

Parameter Name	Parameter Value
Device Name	SIP 300-12 (3309001)
Address	
Serial Number	1120ZP32302100040
MAC Address	
Wan Mode	All
IP Address	
Product Name	Impulse Router E
Hardware Type	Single Model Single Card
Hardware Version	1.2
Firmware	v2.6.230103
Kernel Version	4.14.275

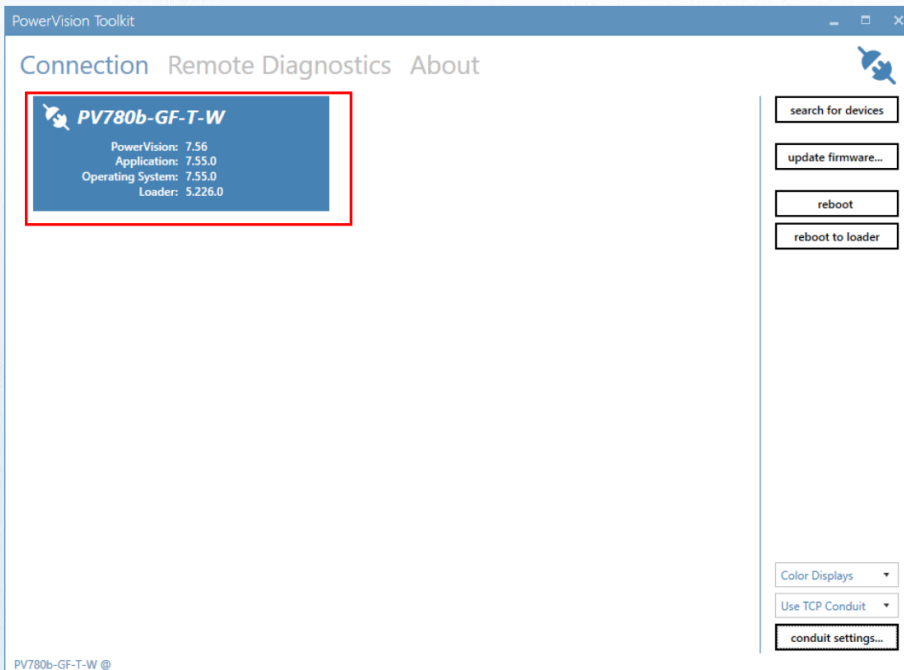


## Using the PowerVision Toolkit

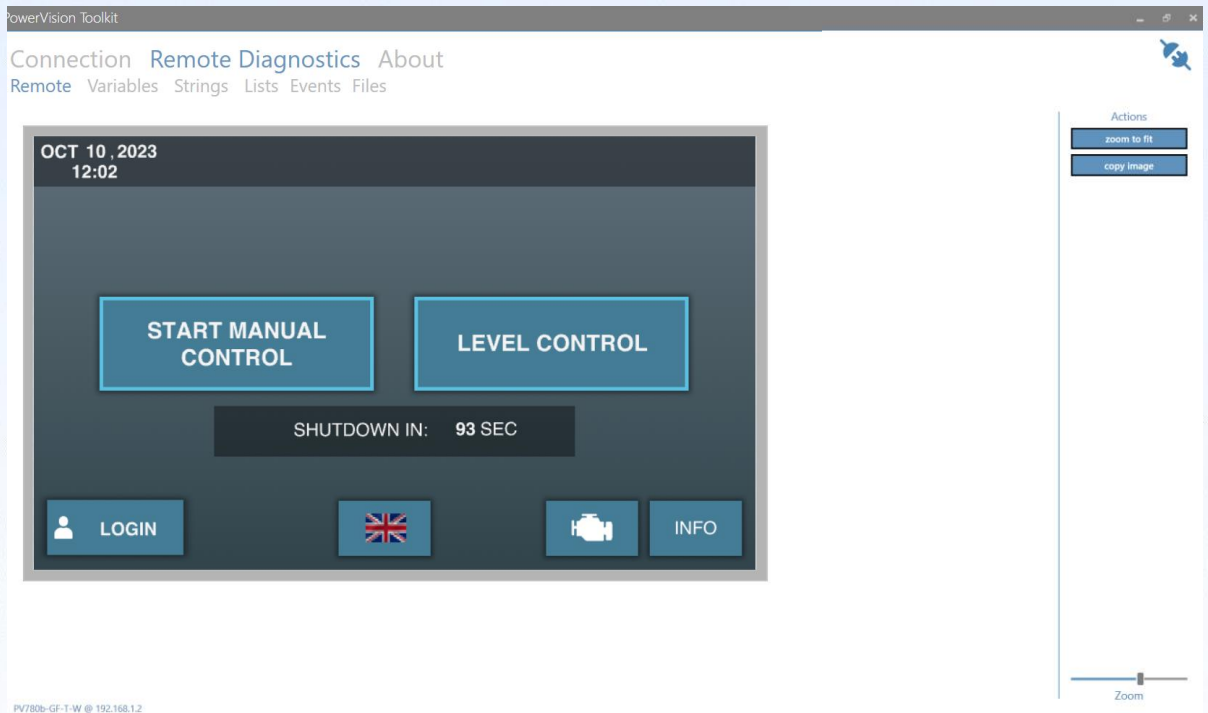
When the connection with SuperLink is successful, the PowerVision Toolkit can be opened via the shortcut on the desktop. Once the PowerVision Toolkit has been started, as minor change must be made via the "Conduit Settings" button as shown below; IP Address 192.168.1.2 and Subnet Mask should be 255.255.0.0.



If this is successful, the pump set selected in the SuperLink application will be displayed:

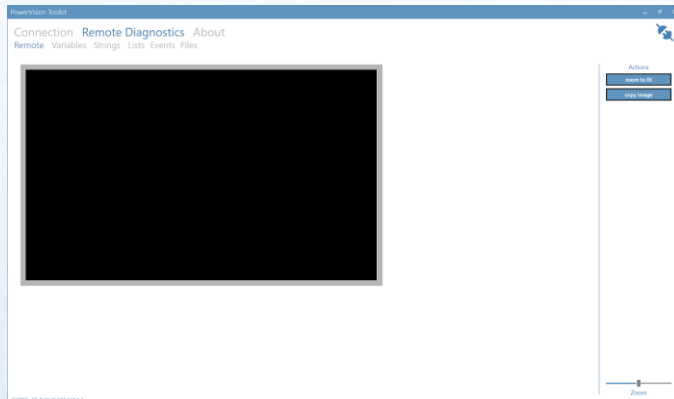


From this point, you can select "Remote Diagnostics" from the horizontal menu. At that moment, the pump screen comes forward and can be viewed remotely. When the screen is in sleep mode, a command can be sent via the menu option "Events". NB! It takes a few seconds to wake the screen from sleep mode.



## Sleep Mode

When the screen is in sleep mode you will see a black screen:

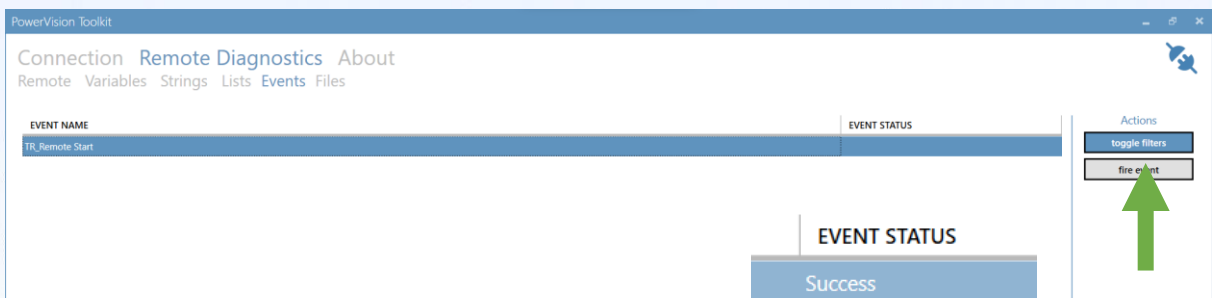


To wake up the display a command has to be sent via the menu option *Events*. Go to the tab **Events** and select the line **TR\_Remote\_Start**. After clicking, the line will appear blue to show it's selected. See the picture on the next page.

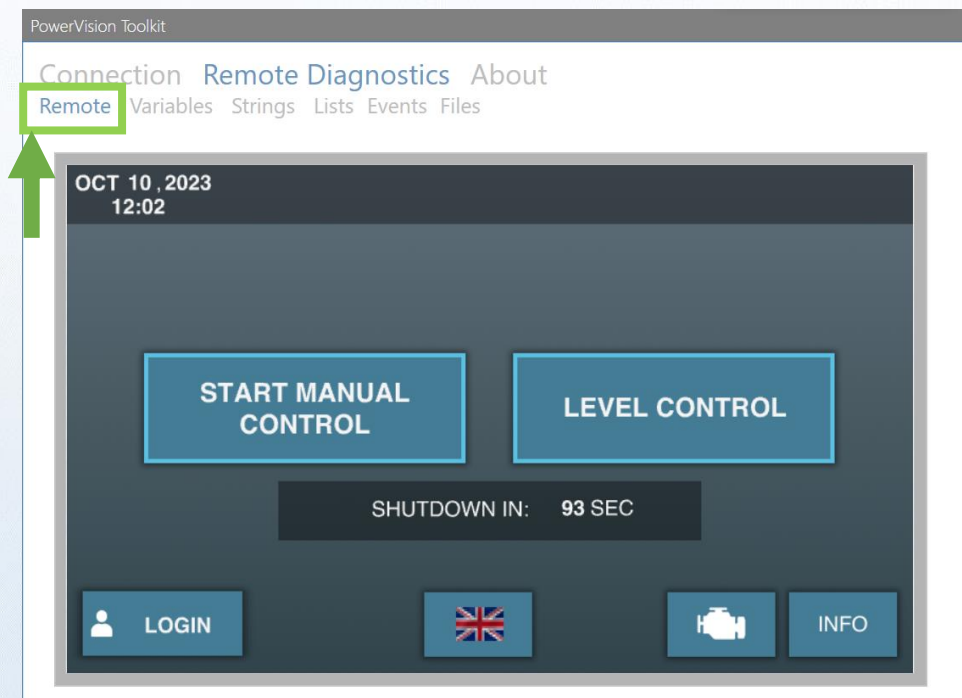
After selecting, the line will be highlighted in blue.



Select **Fire Event** to wake up the screen.



When successful the **EVENT STATUS** shows *Success*. Go back to the **Remote** tab and check if the screen is active.



*Enjoy the advantages of using Ecomizer-Pro wherever you are!*



***ECOMIZER-PRO pump technologies are designed for a better and greener planet***

All rights strictly reserved. Reproduction or issue to third parties in any form whatsoever is not permitted without written authority from the proprietor. Property of Impulse Holding B.V. Copyright Impulse Pumps B.V.

*Impossible to live without water*



Impulse Pumps B.V.  
Arendsenweg 9  
7021 PC Zelhem

Tel: +31 (0)314 641288  
[parts@impulsebv.com](mailto:parts@impulsebv.com)  
[www.impulsebv.com](http://www.impulsebv.com)