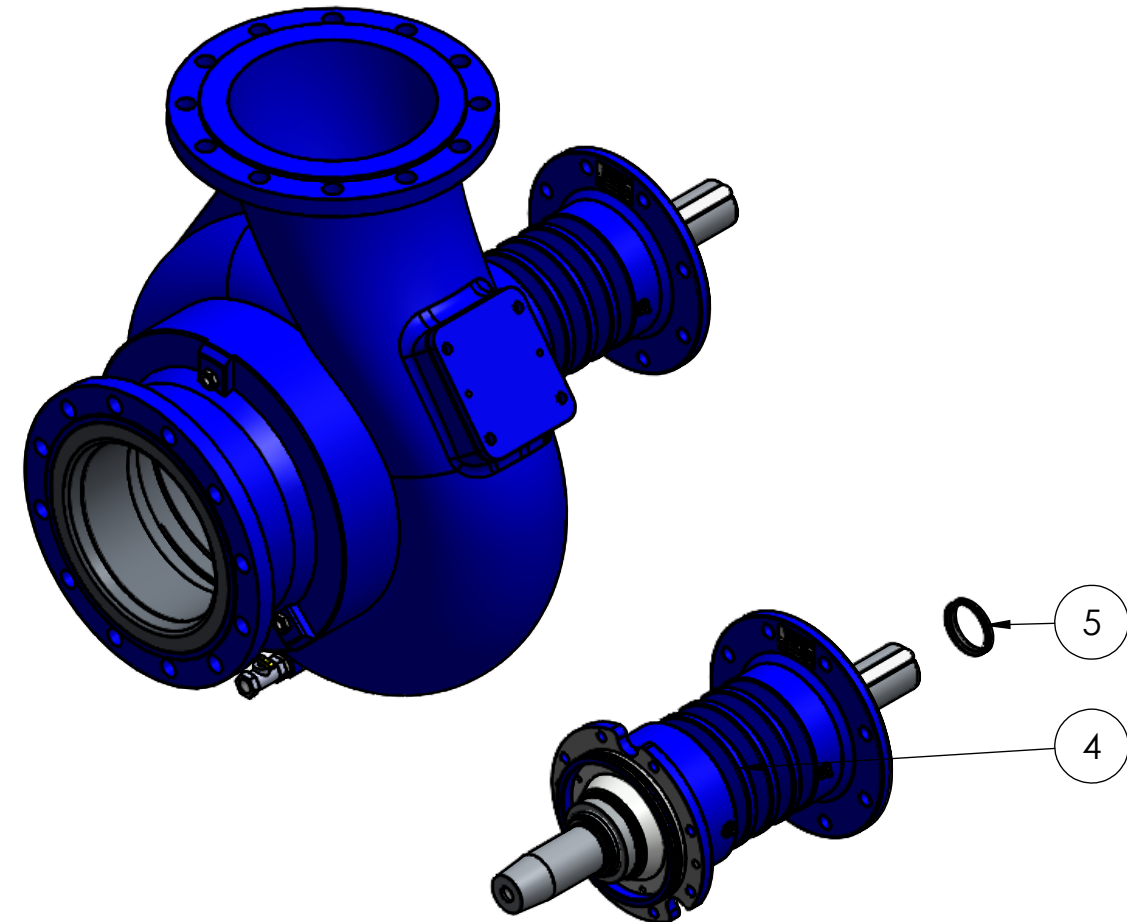
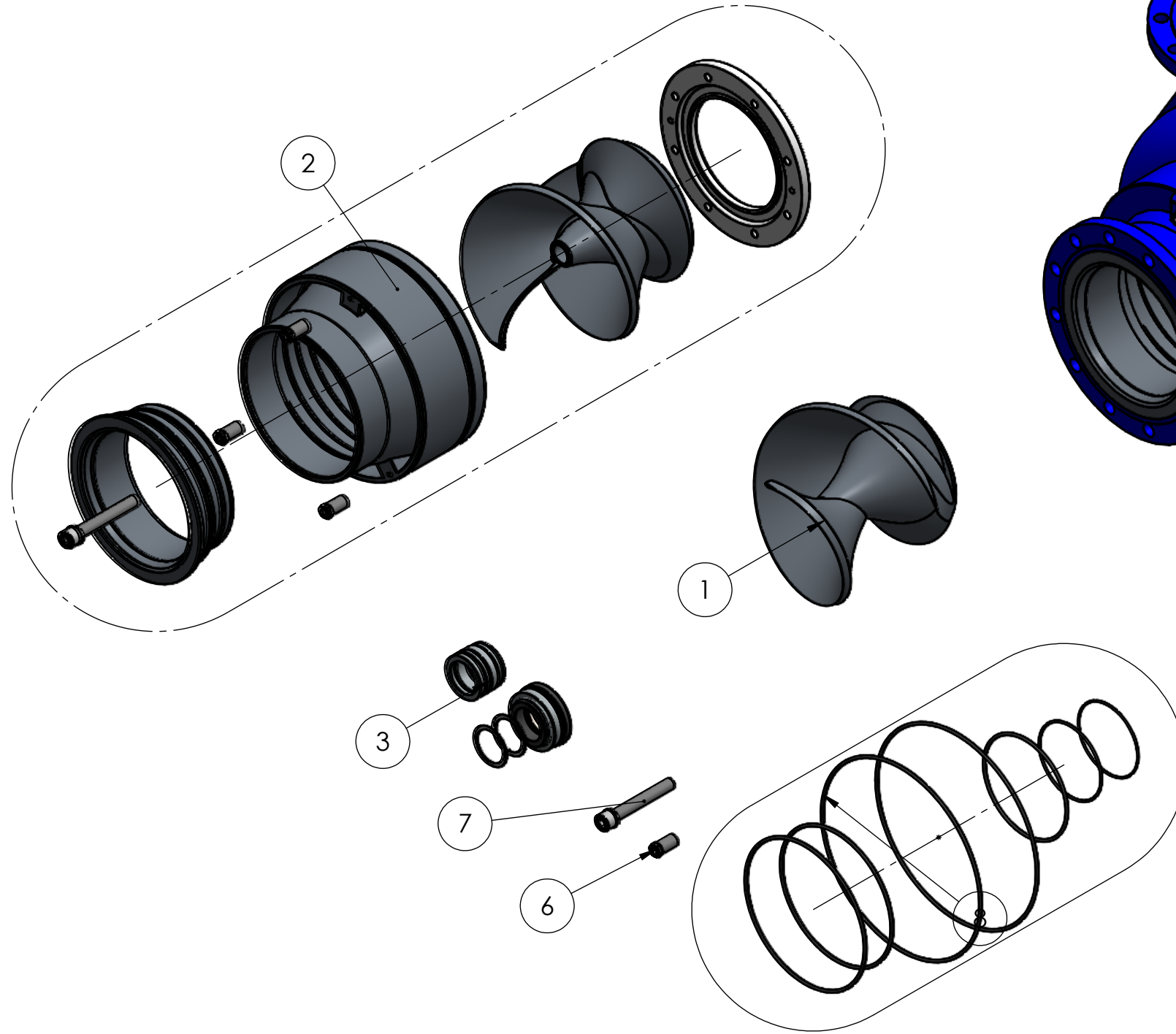


SIP 250-10 / 300-12 SPAREPART LIST



ITEM NO.	PART NUMBER	DESCRIPTION	QTY.
1	32747	Impeller SIP-250 10 Inch	1
2	33706	SIP 250-10 INTERNAL REPLACEMENT SET	1
3	33703	SEAL SET SIP 200-300 SHAFT 60 mm	1
4	32756	BEARING HOUSE REPLACEMENT SIP 200-300 (+BACKSEAL)	1
5	30812	V-ring NBR V-60 A	1
6	32775	Front Adjustment Screw	1
7	35172	IMPELLER BOLT M20 x 140 mm WITH WASHER (SIP 200/300)	1
8	35194	O-RING SET SIP 250-10	1

Revision information				UNSPECIFIED GEOMETRICAL, LINEAR AND ANGULAR TOLERANCE SHALL CONFORM TO ISO 2768-MK (UNLESS OTHERWISE STATED)			format	scale	projection	
Rev	Date	Drn	Appr	Info	A3	1:9				
-	21-01-2025	JG	-		Drawn: JG			web: www.impulsebv.com		
					Date: 21-01-2025			Material:		
					Rev.: -			Weight: Material <not specified> Kg		
					State: Approved			Treatm.: Assemble		
PDM No. : 35096				Title: SIP-250 PUMP EXPLODED VIEW						

All rights strictly reserved. Reproduction or issue to third parties in any form whatever is not permitted without written authority from the proprietor. Property of Impulse Holding B.V. Copyright Impulse Pumps B.V.